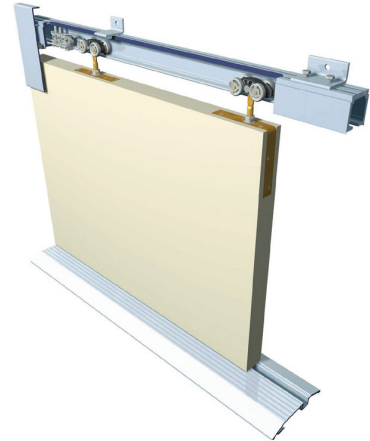


PACER SLIDING

For wooden and metal sliding doors weighing up to 200kg



Combining performance and style Pacer Sliding is suitable for wooden, aluminium or metal doors weighing up to 200kg. The system is ideally suited to modern applications including offices, shop fronts and other stylish interiors. Various guide channels are available including brass, aluminium and an aluminium threshold. A track mounted aluminium fascia is also available for face fixed and soffit fixed applications to conceal the working components. Wooden doors may be either solid or glazed and metal doors can be angle or box section.



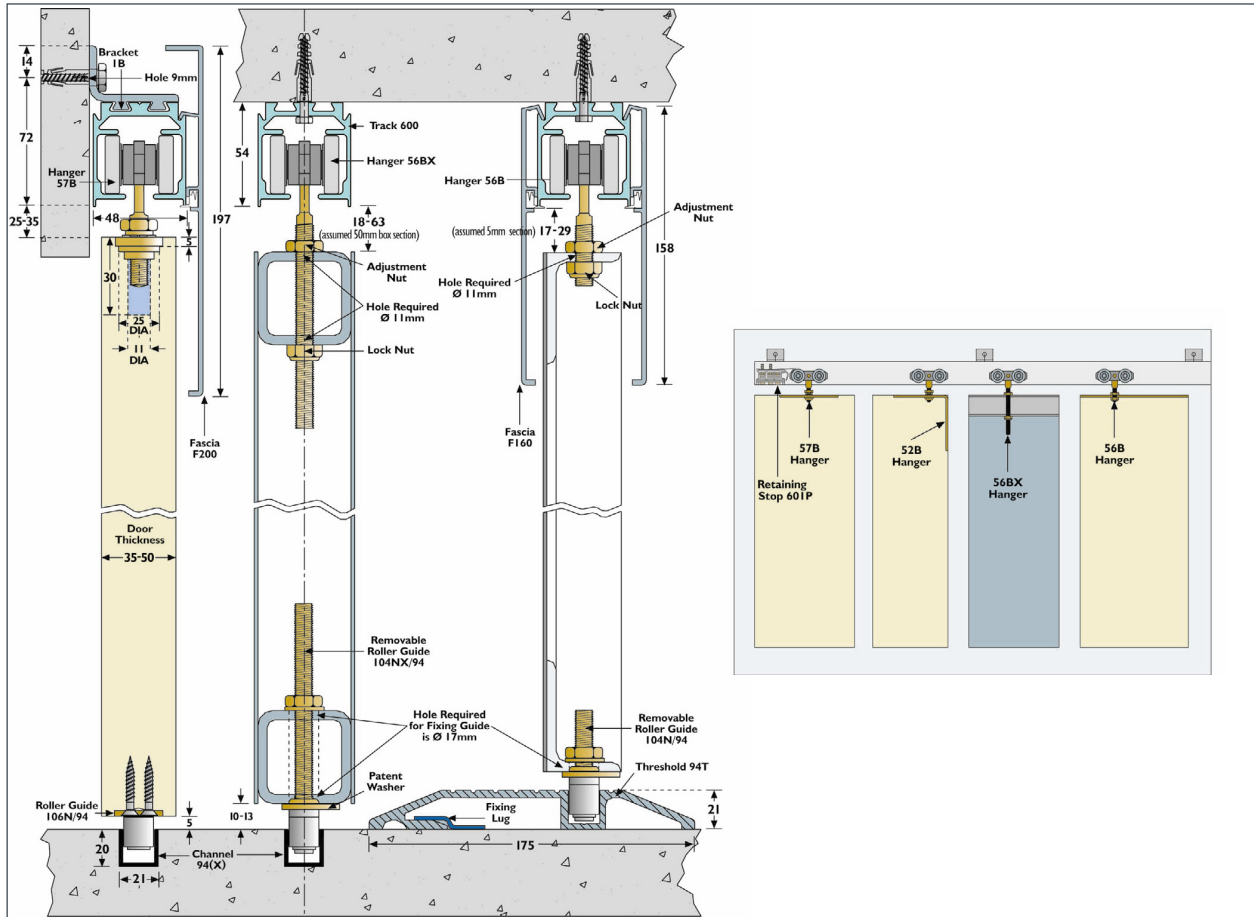
Product Information

Product	Max. Door Width	Door Thickness Range	Max. Door Weight
Pacer Sliding	2000mm	35 - 46mm	200kg

Product Specification

Component	Description	Short Code
Track	Aluminium mill finish track in 2000, 2500, 3000, 3500, 4000 and 6000mm lengths	600/****
	Anodised aluminium track in 2000, 2500, 3000, 3500, 4000 and 6000mm lengths	600/****AN
Brackets	Face fixed bracket	1B
	Joining bracket	1BX
Hangers	Angle plate fixing hanger for wooden doors	52B
	Hanger for angle frame metal doors	56B
	Hanger for box frame metal doors	56BX
	Concealed fixing hanger for wooden doors, aluminium doors or metal doors	57B
Guides	Floor mounted guide for wooden, aluminium or metal doors	89/2N
	Concealed fixing guide for wooden or aluminium doors	106N/94
	Guide for angle frame metal doors	104N/94
	Guide for box frame metal doors	104NX/94
Guide Channel	Brass guide channel available in 1500 and 3000mm lengths	94/****
	Aluminium guide channel in 1500, 2000, 2500, 3000, 4000 and 6000mm lengths	94X/****
	Aluminium threshold in 2000, 2500, 3000, 3500, 4000 and 6000mm lengths	94T/****
	Polypropylene channel in black in 2000, 2500, 3000, 3500, 4000, 5000 and 6000mm lengths	94P/****
Stop	Retaining stop mounted within track	601P
Fascia	Satin anodised aluminium fascia for soffit fixed track in 2000, 2500, 3000, 3500, 4000 and 6100mm lengths	F160/****
	End cap for F160 fascia	F160/ECP
	Satin anodised aluminium fascia for face fixed track in 2000, 2500, 3000, 3500, 4000 and 6100mm lengths	F200/****
	End cap for F200 fascia	F200/ECP

**** Replace by length of track for full short code



CHOICE OF HARDWARE

Tracks



600



600AN

Brackets



1B



1BX

Hangers



52B



56B



56BX



57B

Guides



89/2N



106N/94



104N/94



104NX/94

Guide Channel



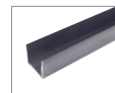
94



94X



94T



94P

Stop



60IP

Fascia



F160



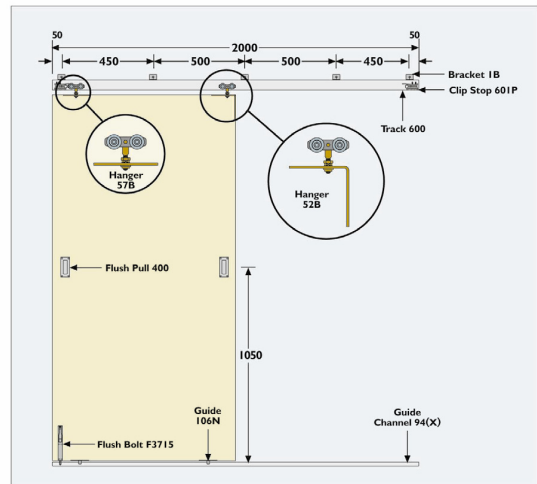
F160/ECP



F200



F200/ECP



Accessories

View our full range of accessories on page 138